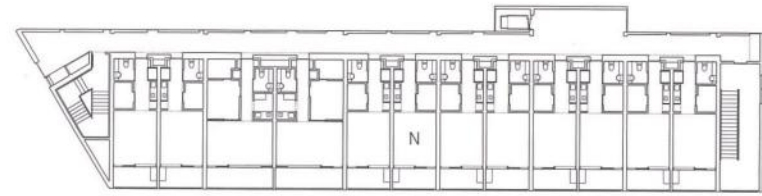


# Liberty Garden Elderly Care House

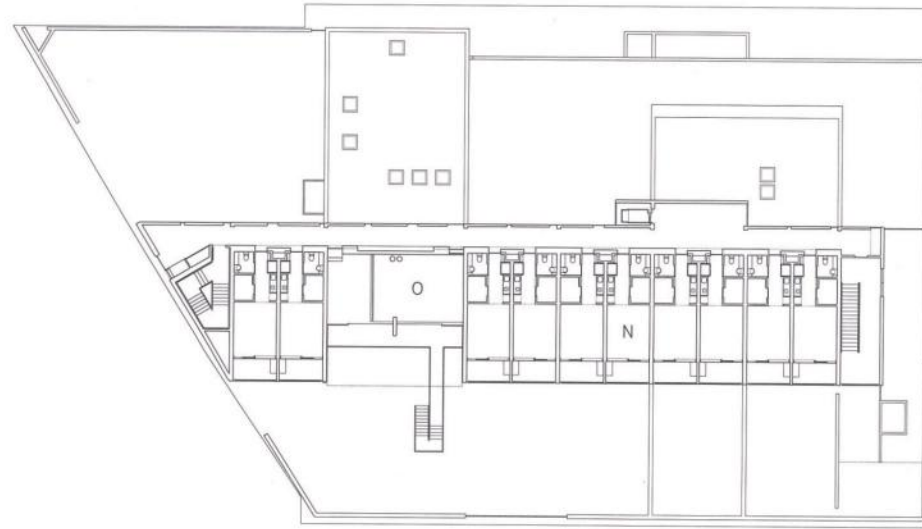
矢板久明建築設計研究所  
ケアハウス・リバティーガーデン

This care facility in Saitama, in the suburbs of Tokyo, is for elderly people capable of living alone and provides support such as dining, bathing and health management facilities. Private rooms are located in the center of the site, dividing it into two parts. The parts are further divided by the administration, dining and bathing blocks, leaving space for a number of gardens, each with a distinct character. The internal spaces connect the gardens, preventing them from being isolated, and maintain the unity of the site. As a result of this, the interior does not need artificial lighting during the day. To provide comfort for the elderly, spaces allocated to the residents have been made as large as possible by minimizing the width of the corridors, while still allowing for wheelchair access. The slit windows in the north wall were designed using the Fibonacci series.

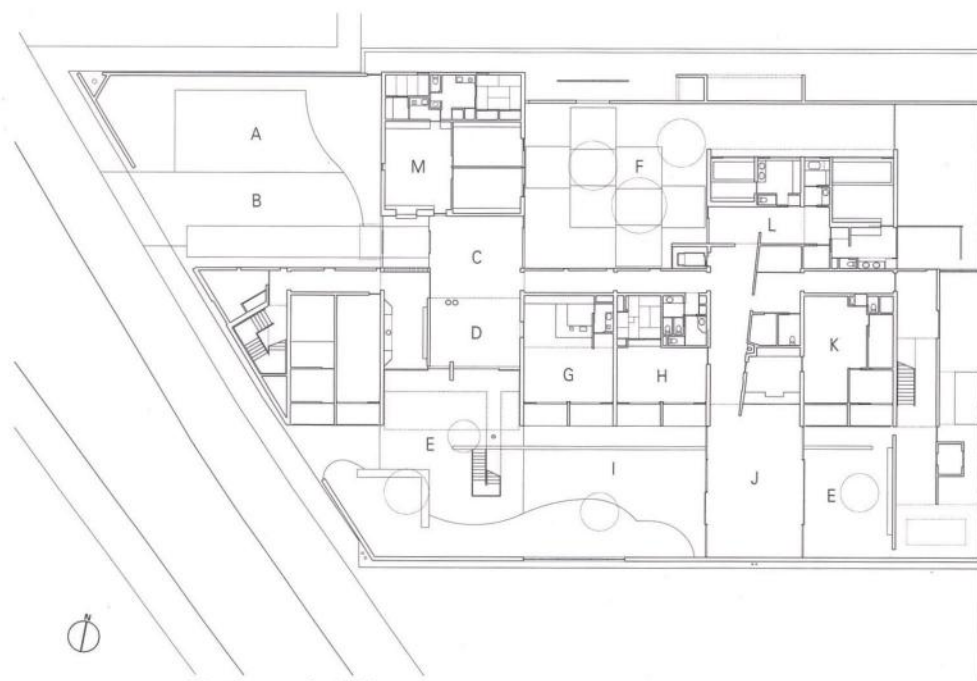
東京の近郊に建つ自立した生活が可能な高齢者を対象とした食事や入浴、健康管理などのサポートのついたケアハウスである。居室棟により二分された敷地に管理棟、食堂棟、浴室棟を配置し、それぞれの隙間を性格の異なる庭とした。これらの庭は可能な限り孤立せず敷地全体がひとつの空間となるように内部空間によって結ばれている。そのため内部空間は日中ほとんど人工光は必要としない。ここでは廊下の幅を車椅子が通行可能な最低限の広さにとどめるなどし、限られた面積を居住者が楽しむためのスペースに割り当て、高齢者が快適に住むための家が目指された。また北側の壁にはフィボナッチ級数による幅の異なるスリット窓が設けられている。



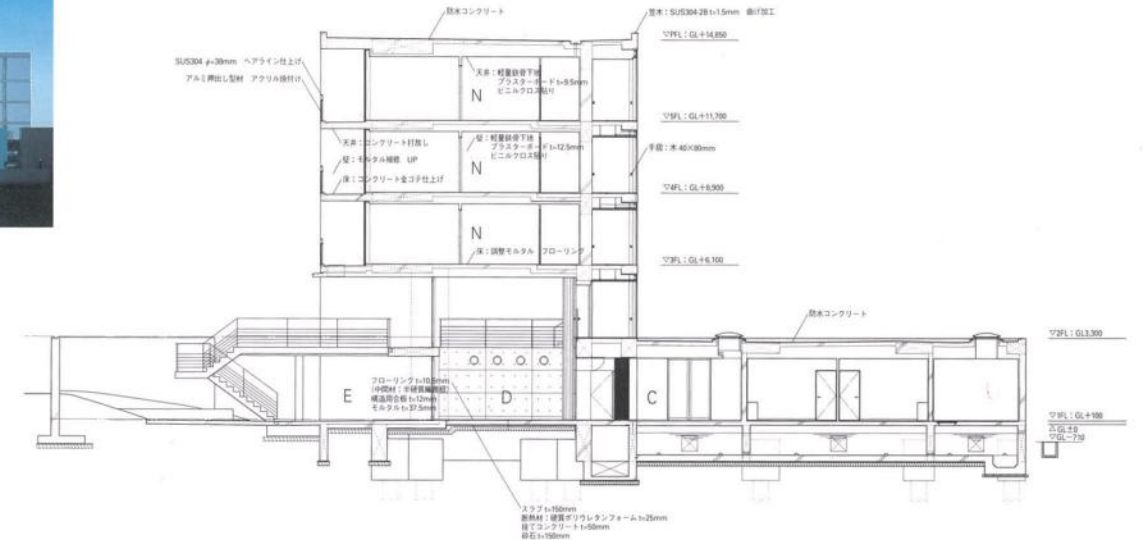
Typical floor.



Second floor.



First floor; scale: 1/600.



Section; scale: 1/300.

(facing page) View toward the flower garden.  
(above) General view from the north.  
(right) View toward the terrace, seen from the lobby.  
(below left) View of the metasequoia garden, seen from the north.  
(below right) View toward the flower garden across the dining room, seen from the terrace.

(左頁) フラワーガーデンを見る。  
(上) 北側全景。  
(右) ロビーよりテラスを見る。  
(左下) 北側よりメタセコイヤガーデンを見る。  
(右下) テラスより食堂を通してフラワーガーデンを見る。

- A PARKING AREA
- B ENTRANCE COURT
- C ENTRANCE
- D LOBBY
- E TERRACE
- F METASEQUOIA GARDEN
- G LOUNGE
- H RECREATION ROOM
- I FLOWER GARDEN
- J DINING ROOM
- K KITCHEN
- L BATH ROOM
- M OFFICE
- N RESIDENCE ROOM
- O VOID

