

# HISAAKI YAITA + NAOKO YAITA

## PATIO

Tokyo, Japan

Design: 2006–09 Construction: 2009–11

Photos: K. Tanaka

The client desired a simple form residence that cannot be perceived from the outside, though the interior space is wide open. The wish can be said the entire concept of the residence.

The site is located in a residential district that low-rise houses stand in lines spaciouly, which is rarely seen at the center of Tokyo. Even though, neighboring houses stand close by and it required a particular idea in order to secure privacy in the residence.

Firstly, so as to take in light, living, dining and kitchen, which are the central spaces, are arranged on the top second floor. As a way to prevent gaze from the outside, the spaces are enclosed together with a courtyard, Floating Patio, with walls and is placed as if floating above a Japanese-style room's structure of first floor.

At the basement another thin courtyard, Sunken Patio, is made so that it will link to the second floor's courtyard. There, private spaces such as bedrooms and bathrooms are placed under plentiful of light, though they are located in the basement.

The first floor that is inserted between two private spaces on the top and the bottom is treated much intimate to the outside world compared to the two different floors. The Japanese-style room on the first floor is designed to be able to hold tea ceremonies. The second floor's floating structure serves as a large roof for the first floor and the open and dynamic space is created around the structure surrounding the Japanese-style room. The space is analogous to Roji, a designed alley, in the context of traditional Japanese garden and the Japanese-style room will become a tearoom arranged in Roji.

The three-layered courtyard helps to tie the underground Sunken Patio to the first floor's Roji by slightly raising up the adjacent structure that holds water facilities. Furthermore, the courtyard developed into a unified Patio by connecting the Sunken Patio to the Roji and then linking the Roji to the Floating Patio above.

As a result, the light penetrating from Floating Patio fills the first floor's Roji space and is lead to the underground Sunken Patio. Thus, once stepping into the inside of the house, the calm expression of the exterior turns into another world filled with light.

Here, Patio appeared as a new way of an urban residence.

Hisaaki Yaita + Naoko Yaita

施主は、外からは覗けないが内部では開放的な空間が展開する、シンプルな形の住宅を望んでおられた。この要望がこの家のデザインコンセプトの全てと言っても良い。

敷地は東京の都心に近い、都市部では珍しく低層の家がゆったりと建ち並ぶ住宅地にある。しかしながら隣家との距離は近く、ここで高いプライバシーを確保した家とするためには、特別の工夫が必要であった。

まず、主空間であるリビング・ダイニング・キッチンに光を取り込み易いよう、最上階である2階に配置し、この空間が外から覗かれないように、中庭= Floating Patioと一緒に壁で囲い、1階の和室の構造体の上に浮かぶように置いた。

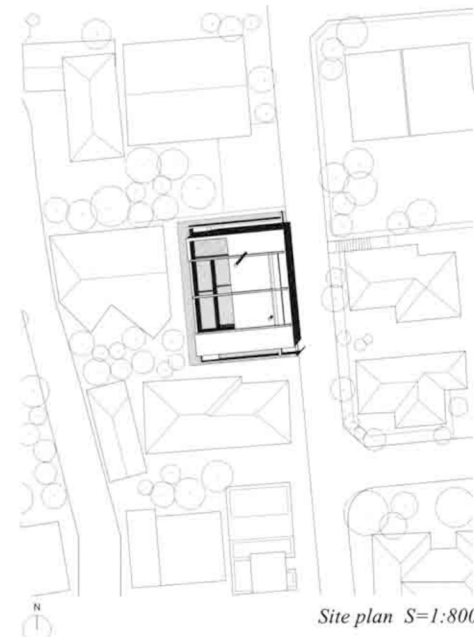
地下にも2階の中庭と連続するよう、もう一つの細長い中庭= Sunken Patioをつくり、地下にありながらも十分に光の入る寝室と浴室等の私的な空間を配置した。

これら上下の二つの私的な空間に挟まれた1階は、上下の階よりも外界とのつながりの強い空間として扱い、ここに配置された和室はお茶会もできるようデザインされている。そして宙に浮いた2階の架構は1階の空間にとっては大きな屋根となり、和室を囲む構造体の廻りに開放性に富む流動的な空間が生まれた。この空間は茶庭に例えれば露地であり、和室は露地に置かれた茶室ということになる。

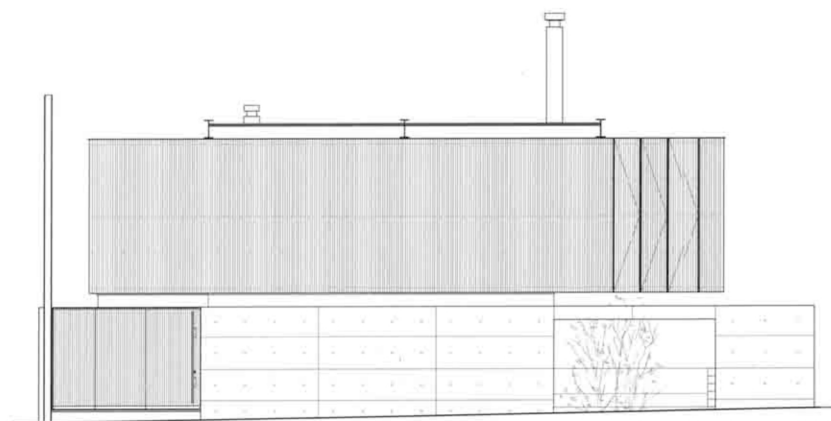
この3層にわたる中庭は、これに接してある地下の水回りを内包した躯体を少し上部にずらすことで、地下のSunken Patioを1階の露地とつなげ、さらに1階の露地を上方のFloating Patioと連続させることで、一体の中庭= Patioへと変貌した。

その結果、2階のFloating Patioからの光は、1階の露地空間を満たし、地階のSunken Patioまで導かれ、外の寡黙な表情の外観から一変して、一歩足を踏み入ると、内部は光に満ちた別世界が展開することになった。

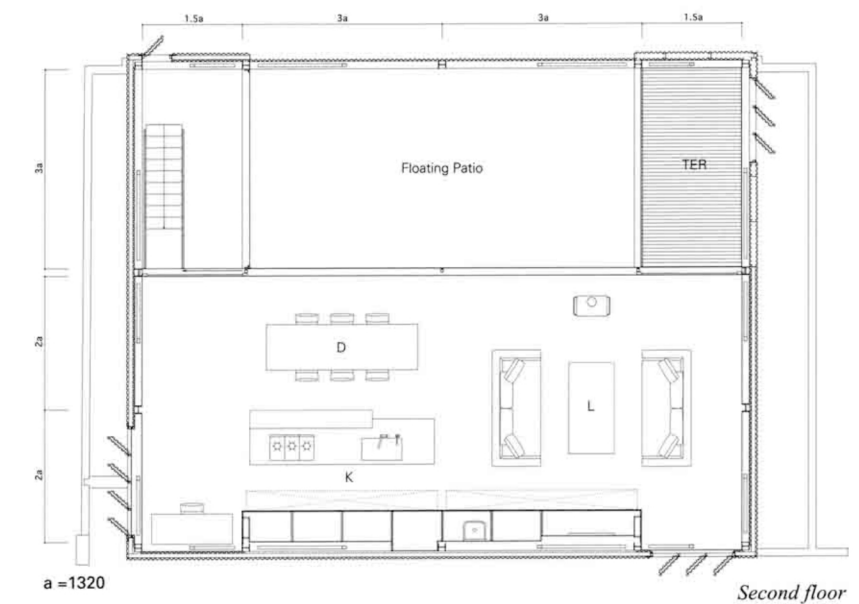
ここに新たな都市住宅の有り様としてのPatioが出現した。  
(矢板久明 + 矢板直子)



Site plan S=1:800

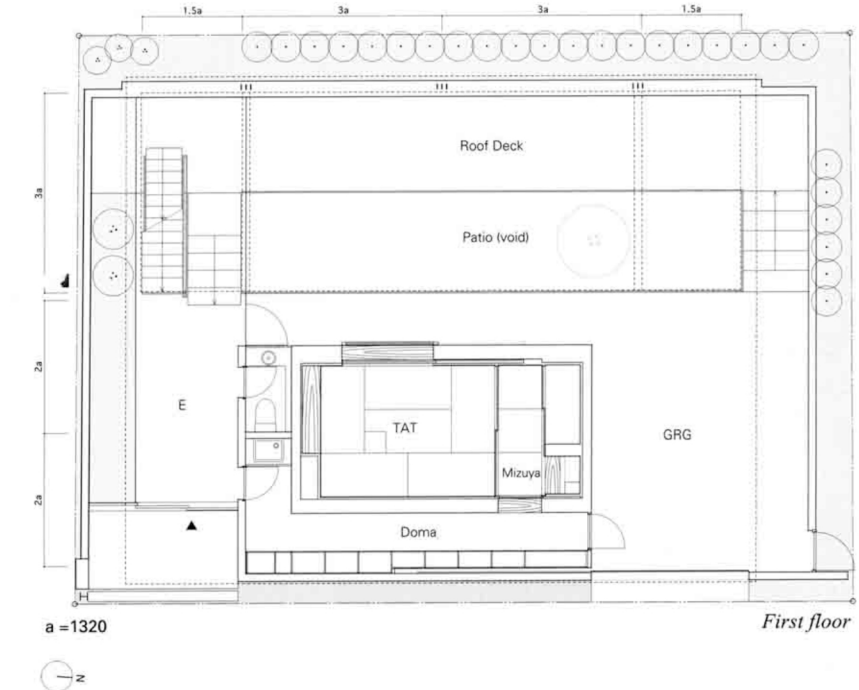


East elevation S=1:150



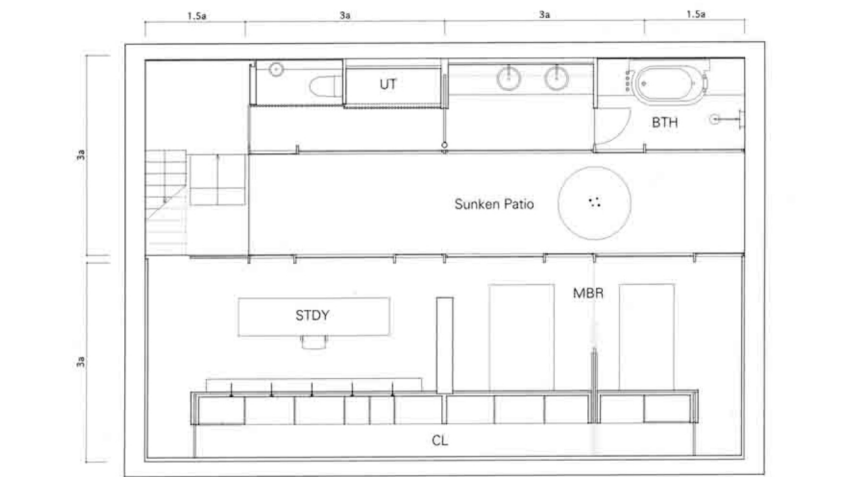
a = 1320

Second floor



a = 1320

First floor



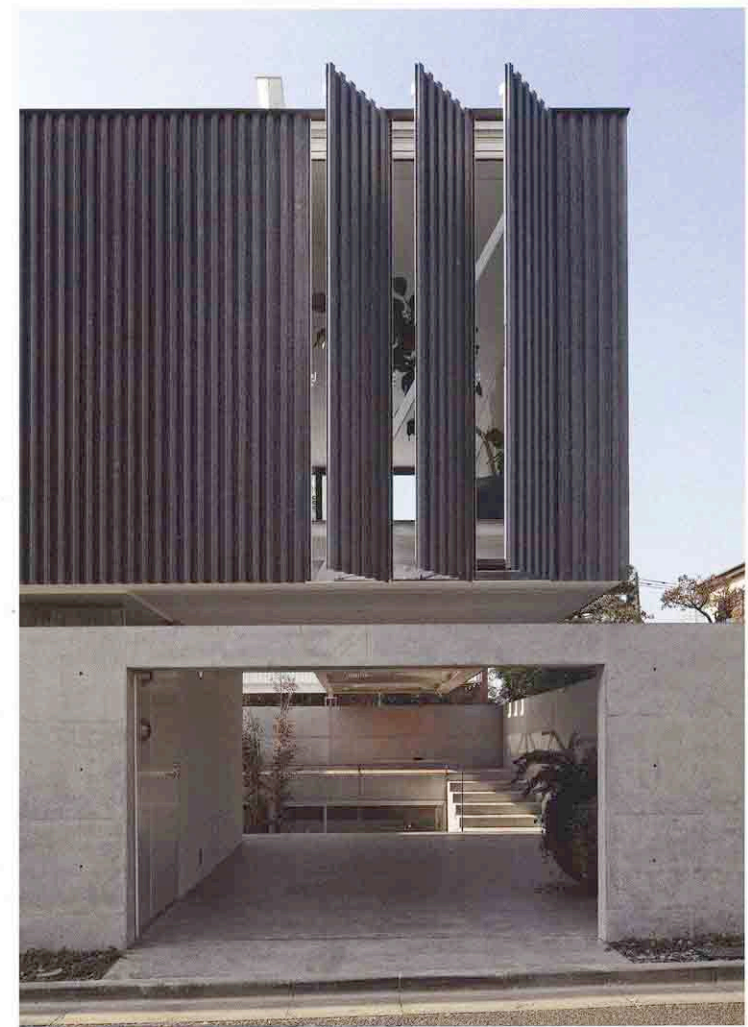
a = 1320mm

Basement S=1:150

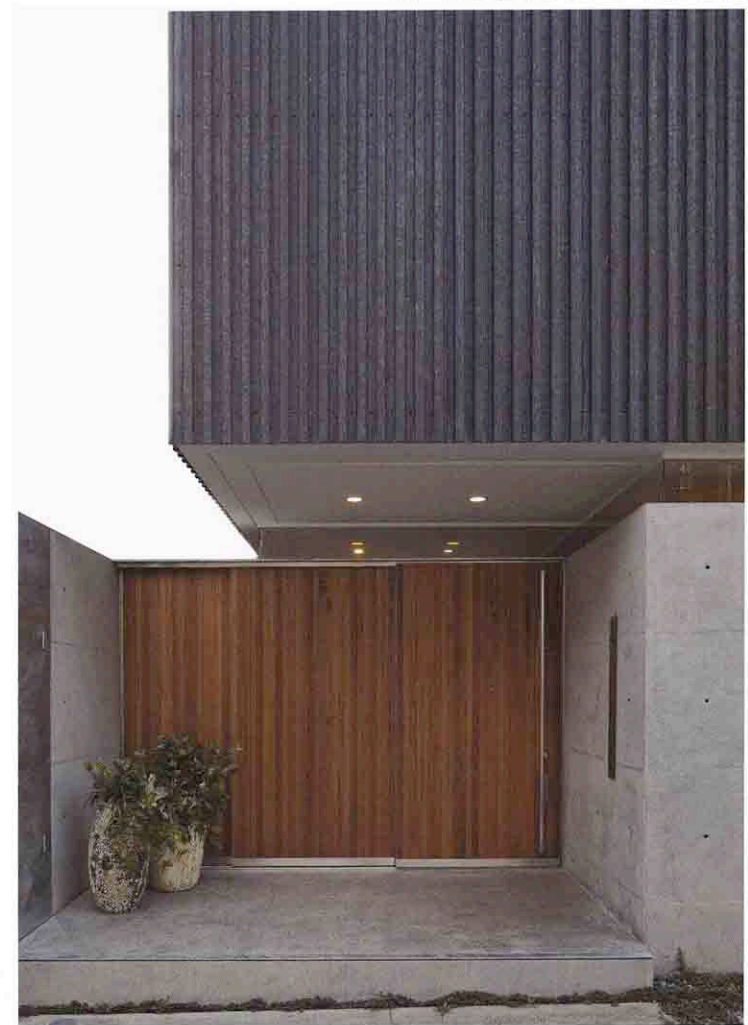
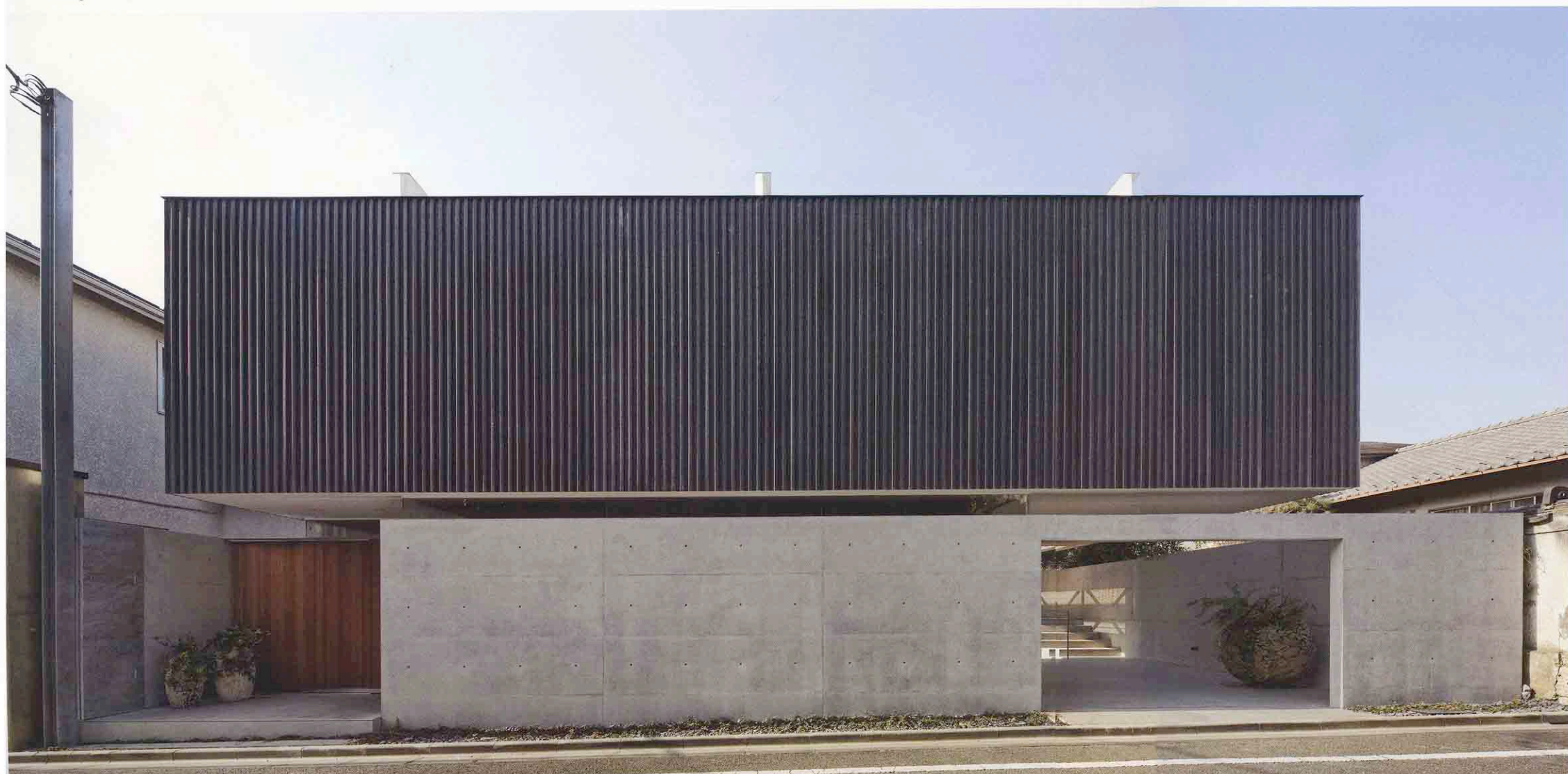
Architects: Yaita and Associates—  
Hisaaki Yaita, Naoko Yaita, principals-in-charge;  
Yoshiko Kurihara, Shu Ishikawa,  
Okubo Motoaki (ex-staff), project team  
Consultants: Katsuharu Sugiura, structural;  
Shimazu Design Office Ltd.—Mitsuhiro Shimazu,  
mechanical; The House, coordination  
General contractor: Nichinan Iron Construction—  
Tadashi Kashima, Takeshi Kagayama  
Structural system: steel frame, reinforced concrete  
Major materials: zinc phosphate coating corrugated  
steel plate, exposed concrete, teak wood flooring  
Site area: 172.19 m<sup>2</sup>  
Footprint area: 79.41 m<sup>2</sup>  
Total floor area: 226.86 m<sup>2</sup>



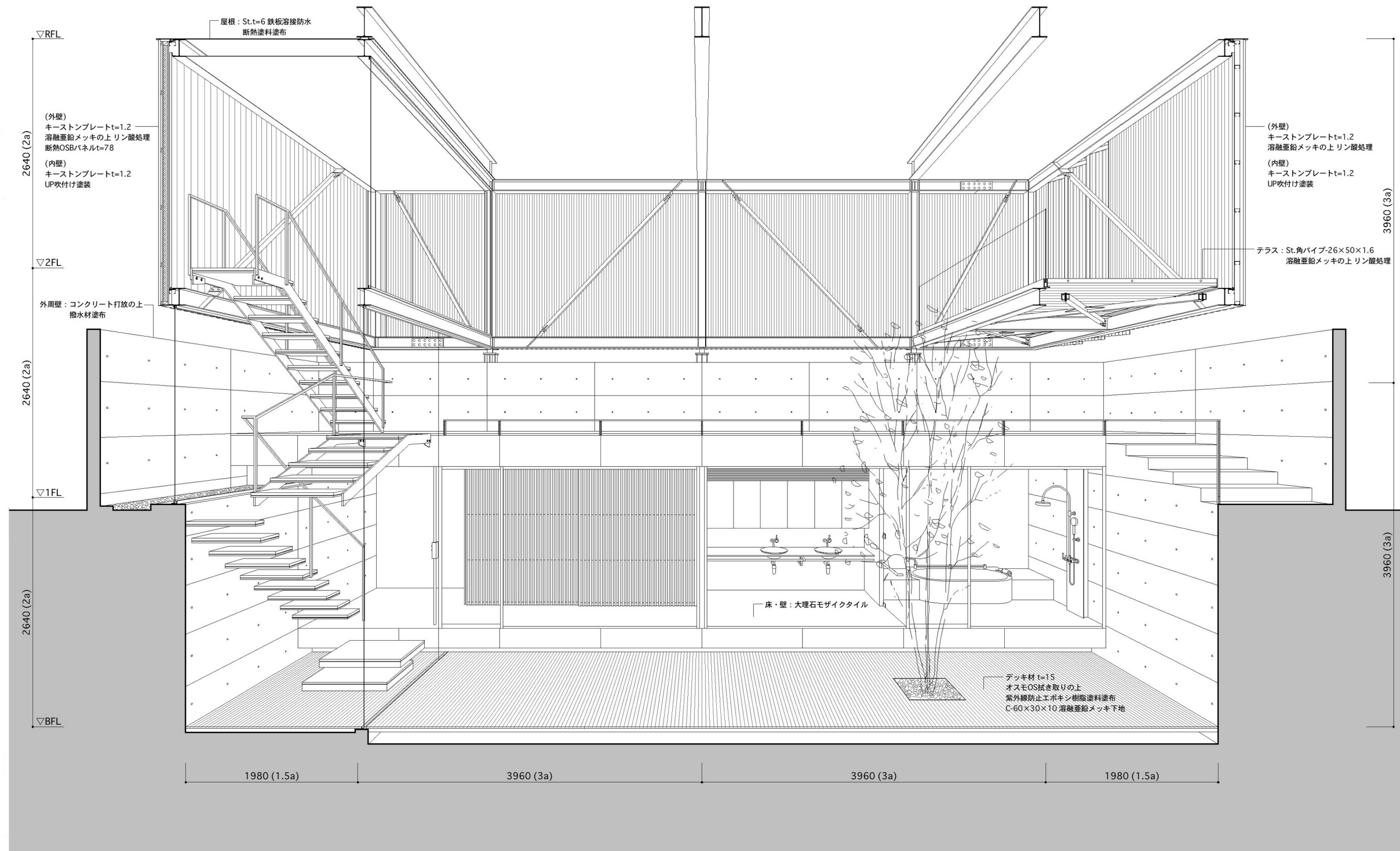
△▽ Evening and daytime view from east 東より見る。夕景と昼景



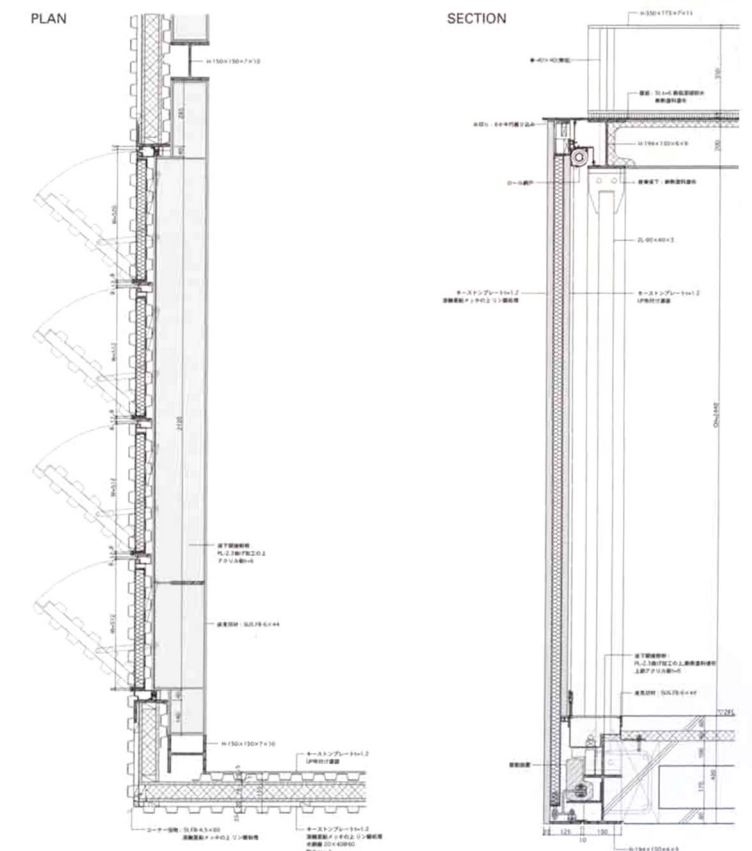
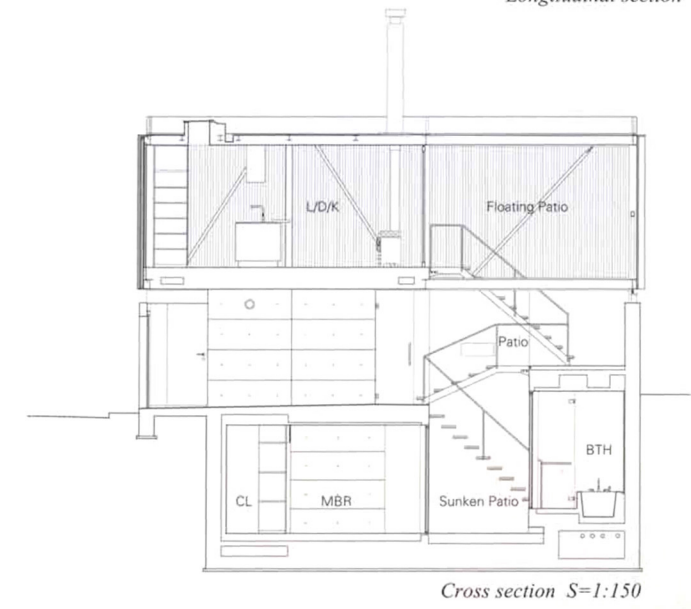
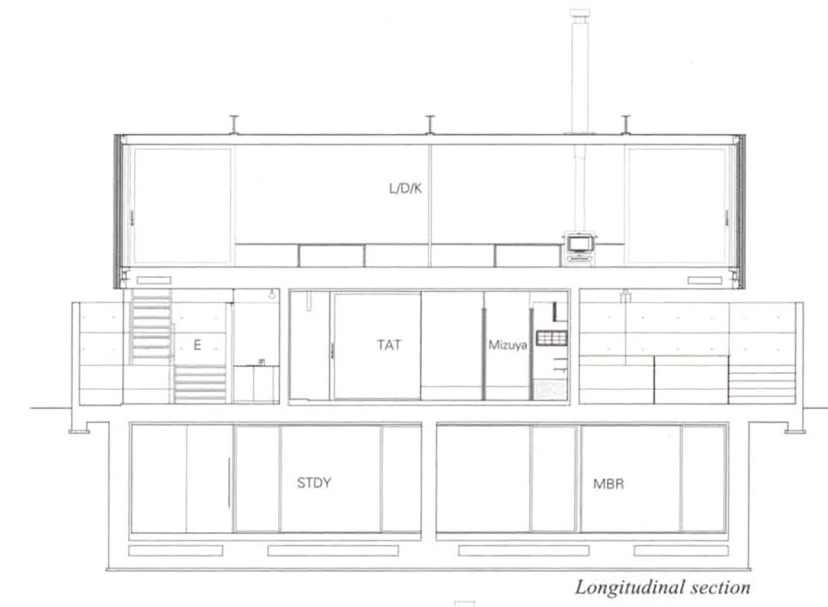
View of garage. Louvers of living room are opened  
ガレージを見る。居間のルーバーが開いた状態



Entrance 玄関



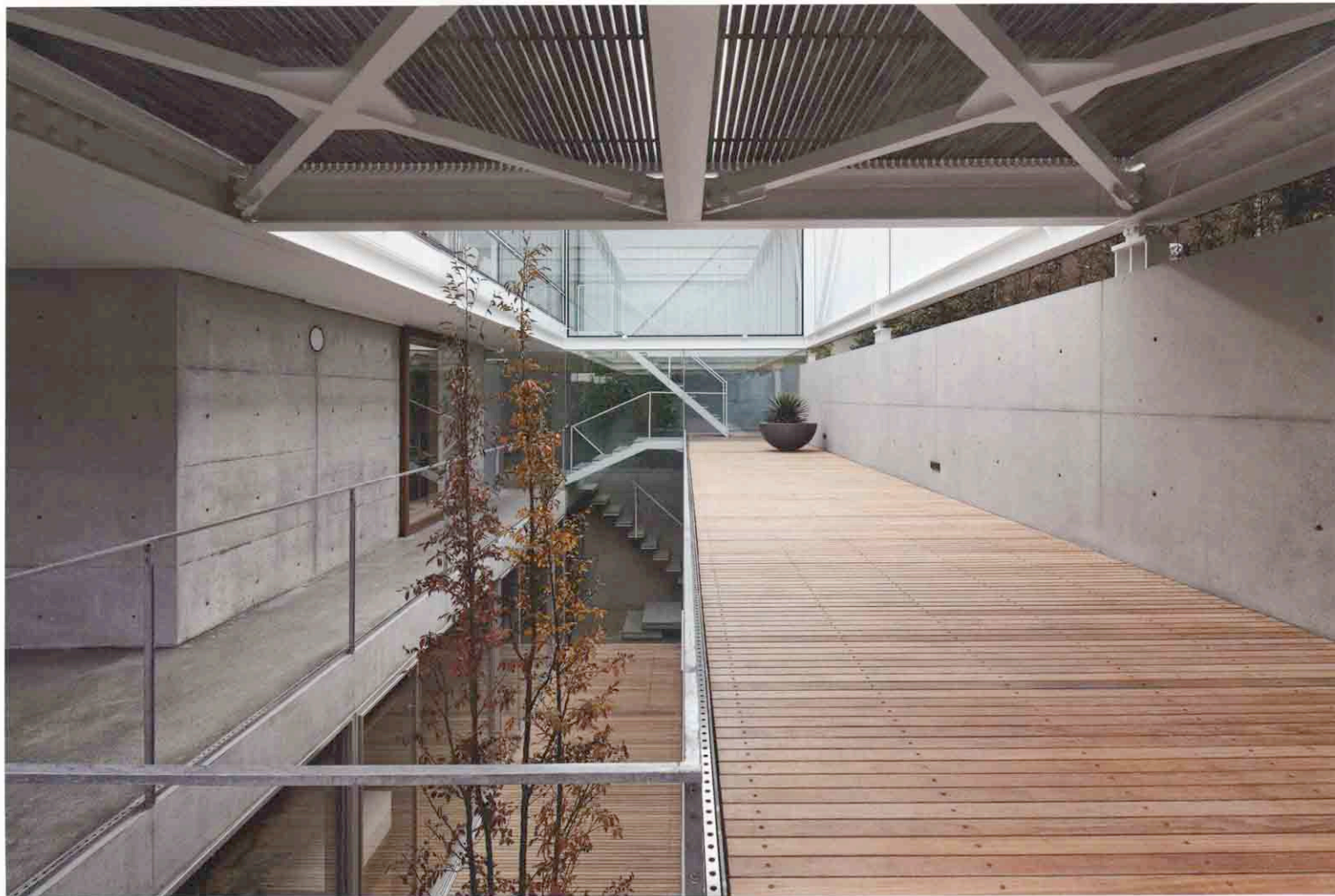
Sectional perspective: sunken patio/ patio/ floating patio S=1:50



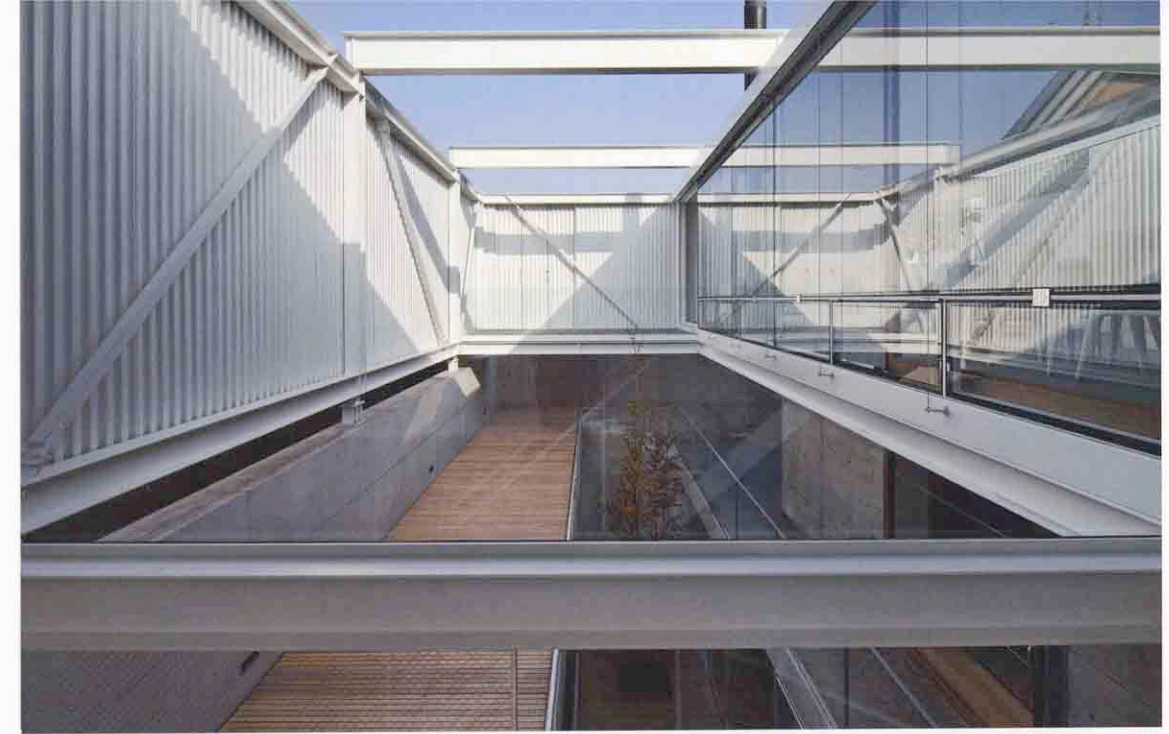
Detail: louvers of second floor S=1:30



View toward roof terrace from garage over patio パティオ越しにガレージよりルーフテラスを見る



Patio, Garage (left) and roof terrace (right) パティオ。ガレージ(左)とルーフテラス(右)

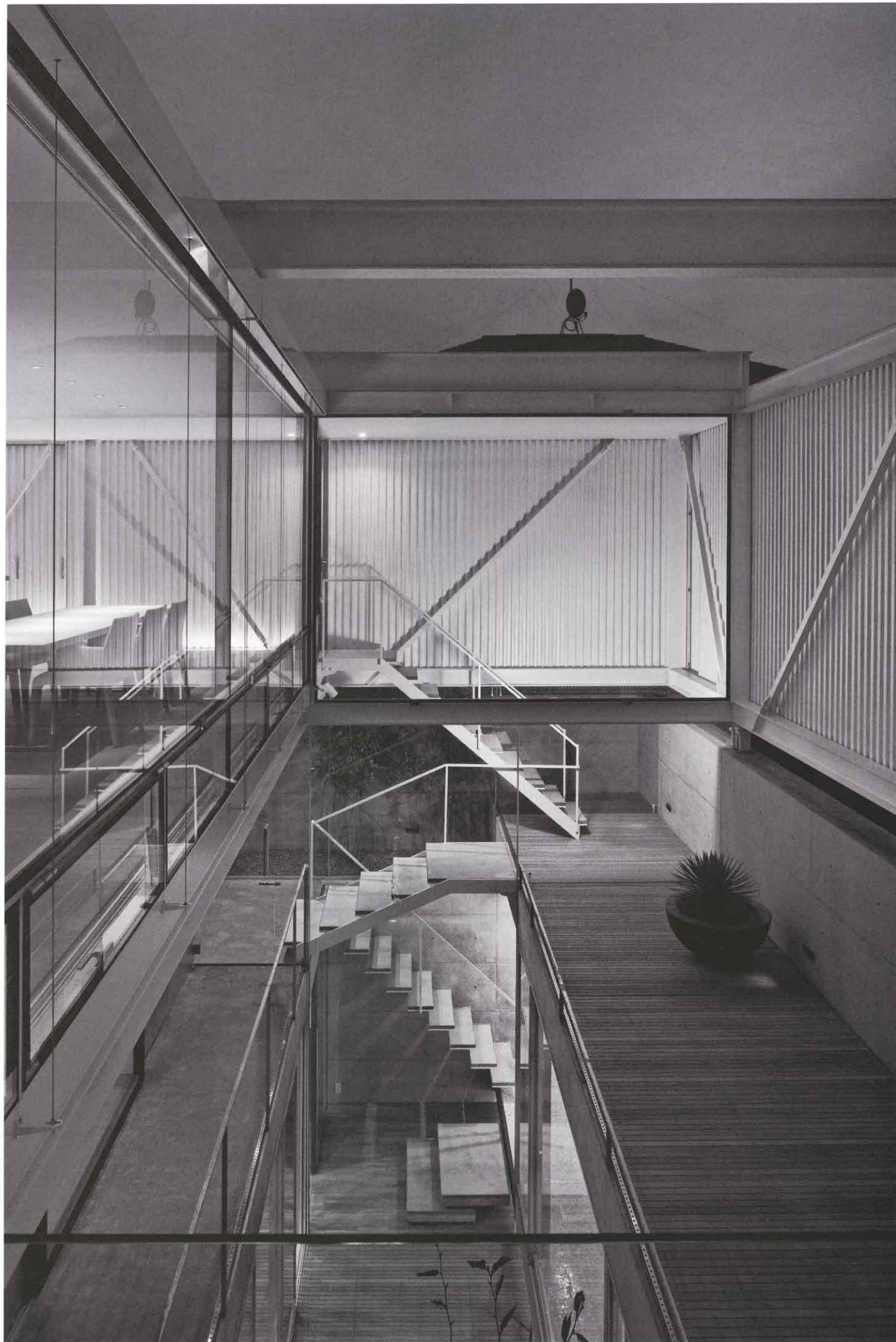


Upper part of patio (floating patio) パティオ上部 (floating patio)

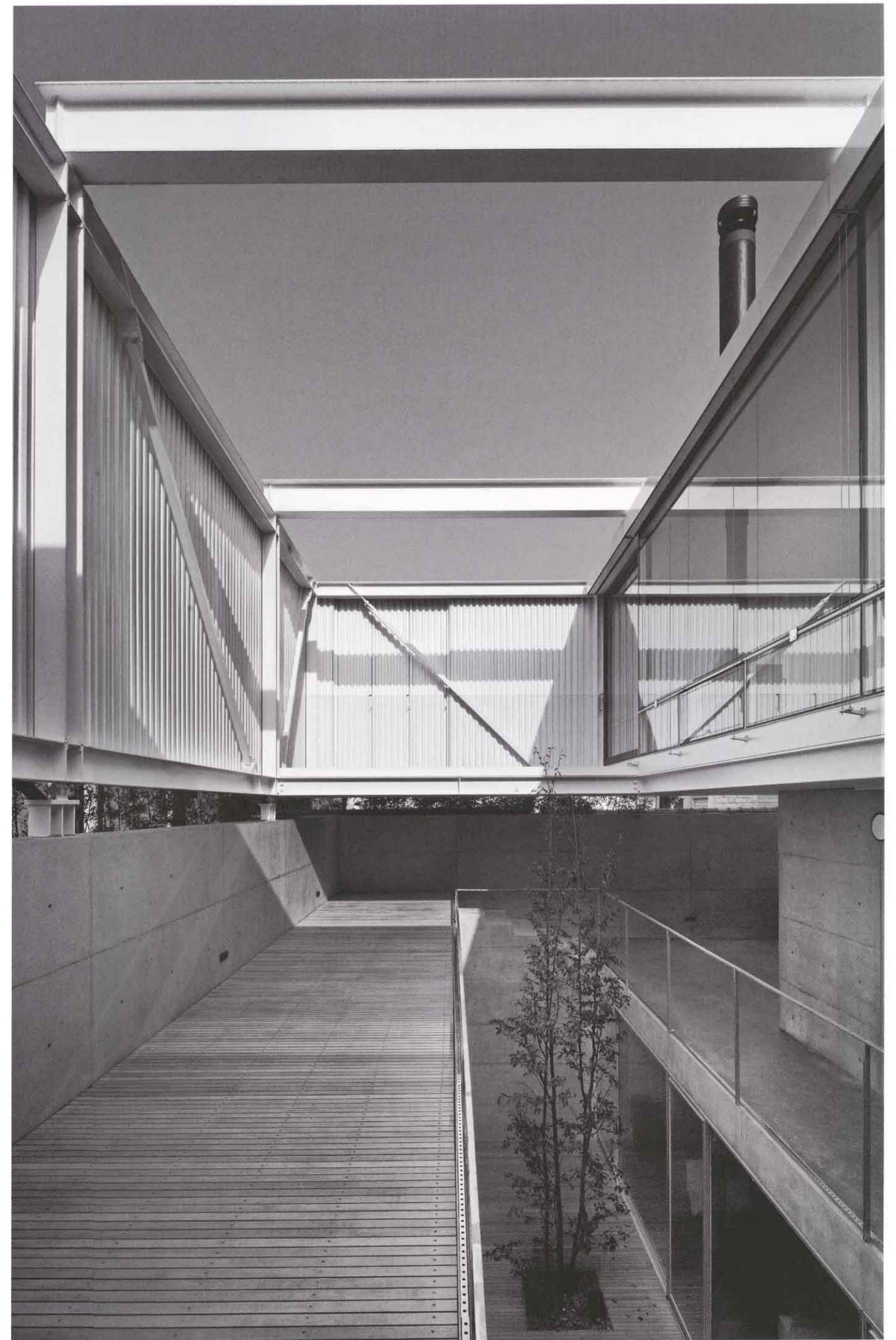


Staircase connecting entrance and dining room 玄関から食堂へ続く階段室△▽





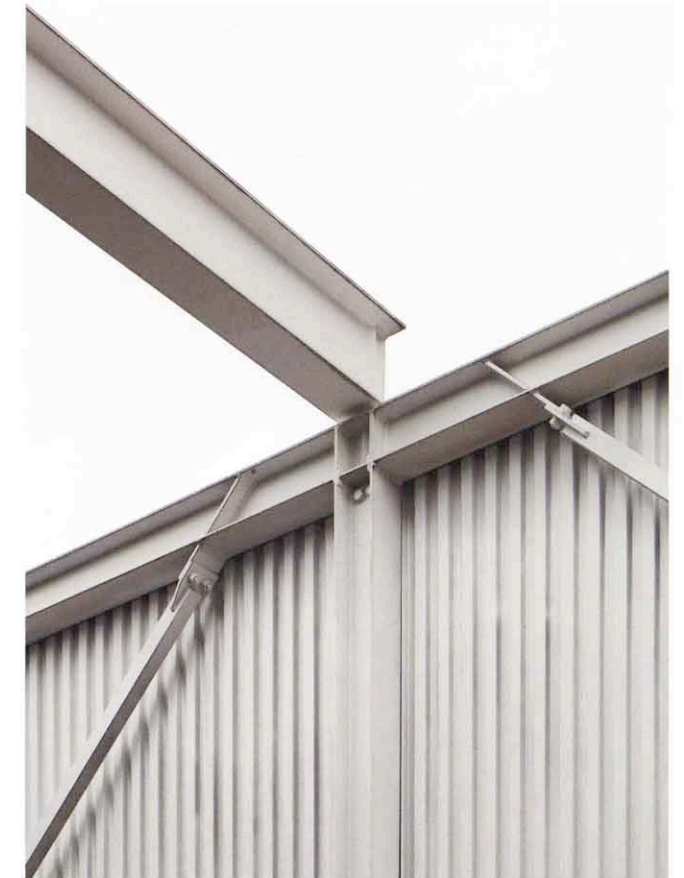
Patio between two volumes with floor level difference 床レベルの異なる二つのヴォリュームの間のパティオ



Patio パティオ



View toward tatami room on first floor, living/dining room on second floor 1階の和室と2階の居間・食堂を見る



Detail of steel structure 鉄骨のディテール



Steel structure of upper part sit on concrete volume of lower part  
下部のコンクリート壁に鉄骨のストラクチャーが載る



Sunken patio on basement 地階に掘り込まれたパティオ



Bathroom 洗面室



Master bedroom on basement 寝室



Study 書斎



Bathroom 浴室



Tatami room 和室



Dining/living room 食堂・居間

Dining room/kitchen 食堂・台所



Kitchen 台所

